

File Reference: Kalia Monograph No. 6.



# Forging the Civil Constabulary

An Administrative Anatomy of Police  
Evolution in the Punjab (Pre-1849)

Before the British Empire could govern the volatile frontiers of the Punjab, it had to relearn the fundamental definition of civil order. This is the timeline of how indigenous village systems, Mughal mandates, and early colonial failures ultimately forged the modern police force.

File Reference: Kalia Monograph No. 6.



# CRIMINOLOGICAL INSIGHTS

BY DR. MRIDUL SRIVASTAVA

Before the British Empire could govern the volatile frontiers of the Punjab, it had to relearn the fundamental definition of civil order. This is the timeline of how indigenous village systems, Mughal mandates, and early colonial failures ultimately forged the modern police force.

# The Evolution of the Punjab Police: 1849–1905

## The Indigenous Foundation



**The Village Watchman System**

Historically, the village watchman was the primary executive police officer of the rural country.



**The Moghul Kotwal**

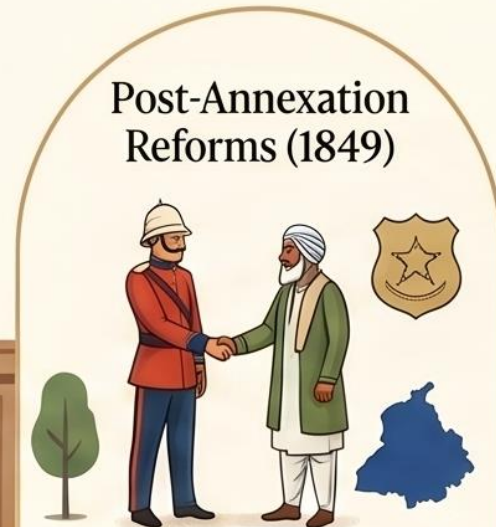
Urban officials who maintained city registries, night patrols, and independent police duties.



**Ancient Espionage Roots**

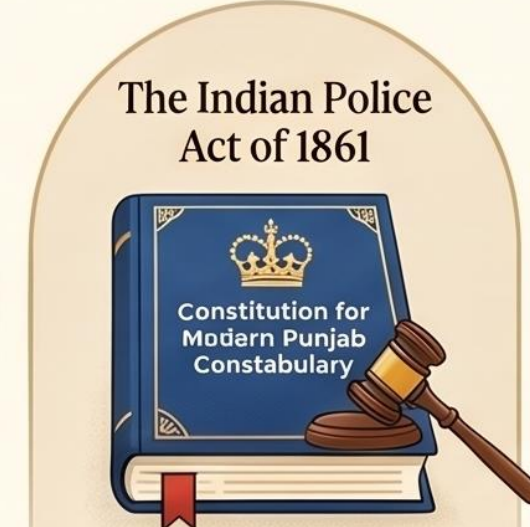
Sophisticated spy networks for crime detection date back to the Mauryan and Moghul periods.

## The Path to Professionalisation (1849–1905)



**Post-Annexation Reforms (1849)**

Immediate introduction of Military and Detective Civil Police following the British annexation.



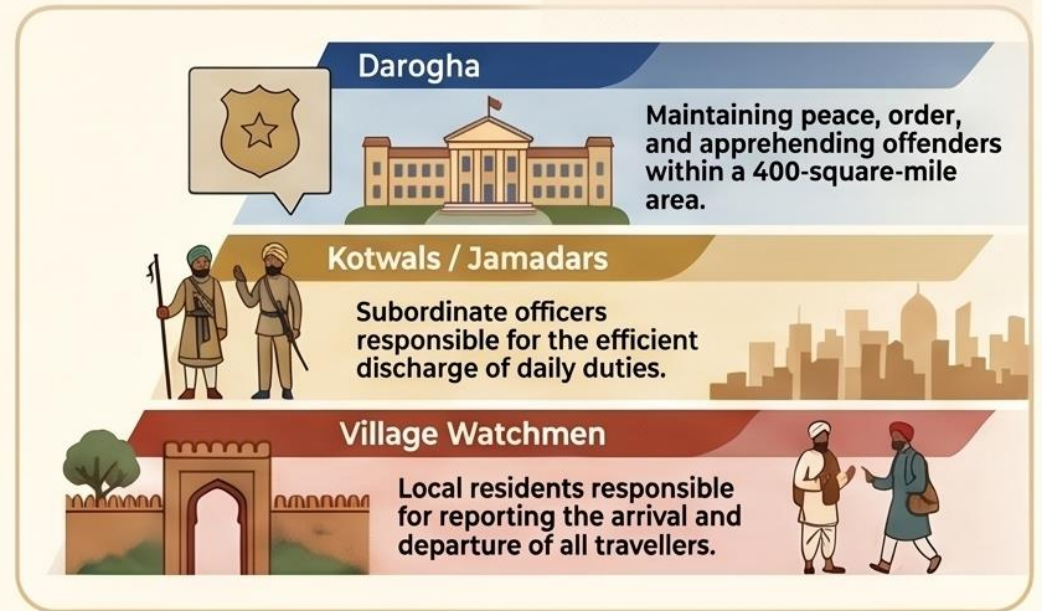
**The Indian Police Act of 1861**

The landmark legislation that established the constitution for the modern Punjab constabulary.



**Specialisation and Training**

Implementation of dedicated Police Training Schools and the Provincial Finger Print Bureau.



1793 Police Regulations: Jurisdictional Tiers (For Comparison)



Implementation of dedicated Police Training Schools and the Provincial Finger Print Bureau.

## The Judiciary (Punishment)

Interprets the law and  
exacts penalties.


Settles matters by private  
compensation after the  
mischief has fallen.

## The Executive (Prevention)

Enforces the legal code.

Government must stop  
offences before they  
are completed.

Removes continuing sources  
of injury in the interest  
of the community.



The English word 'Police' signifies an organized body of civil officers  
dedicated to the preservation of good order and the prevention of crime.  
They are the instruments by which conformity is attained.



## **The Soldier (Military Power)**

- Enlisted to fight enemies.
- Identified with the country's glory.
- Only requisitioned in grave situations (riots/tumult) when civil power is too weak.



## **The Policeman (Civil Power)**

- Employed solely for public welfare.
- Watchers and punishers of criminals.
- Direct servants of the Crown maintaining mutual harmony.

For the peace of the country, troops must be prevented from becoming too familiar with the people. A distinct Civil Police is the only viable solution.

# The Punjab: An Administrative Crucible

**29**

Districts

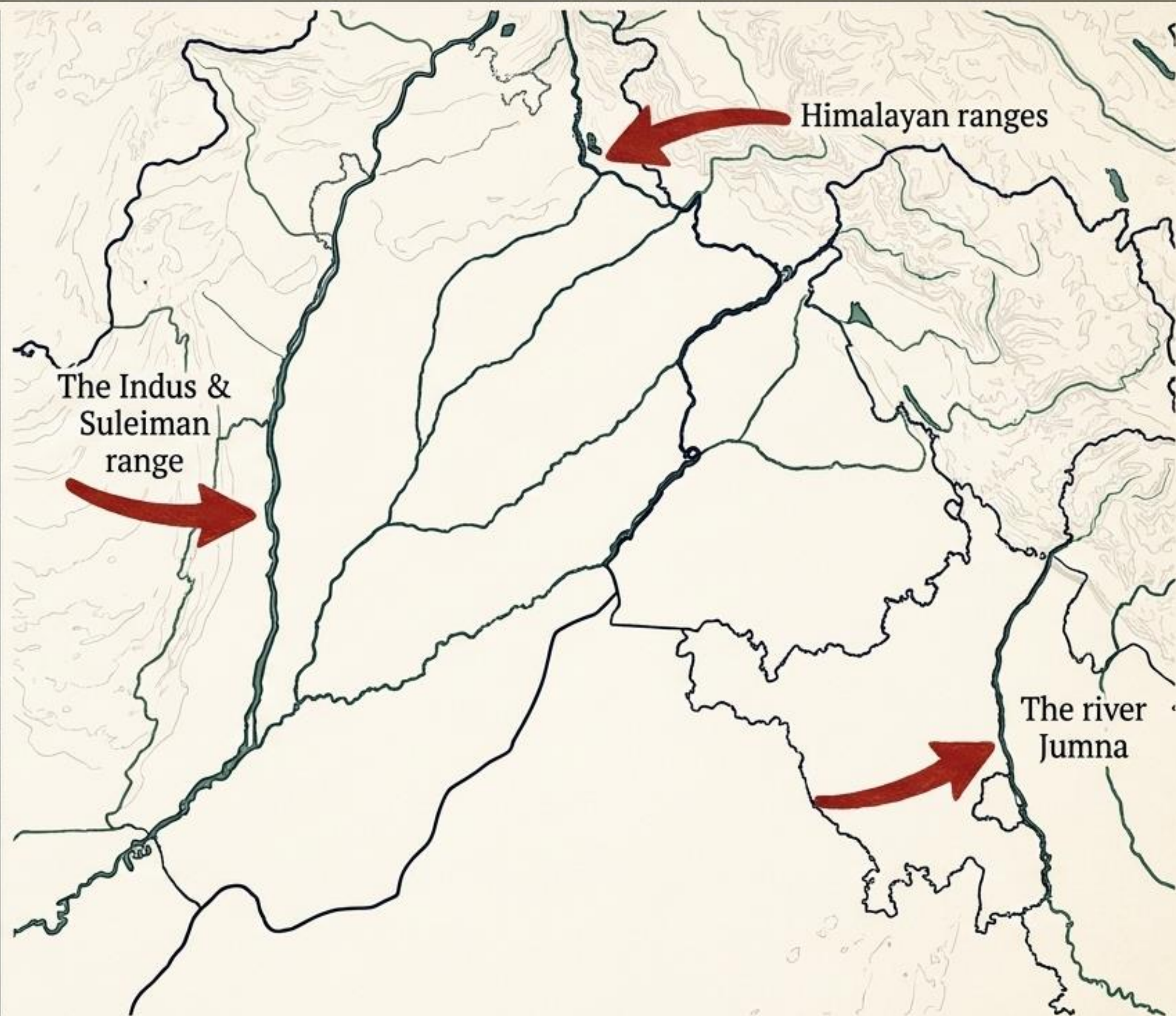
**5**

Divisions (Ambala, Jullundur, Lahore, Rawalpindi, Multan)

**34**

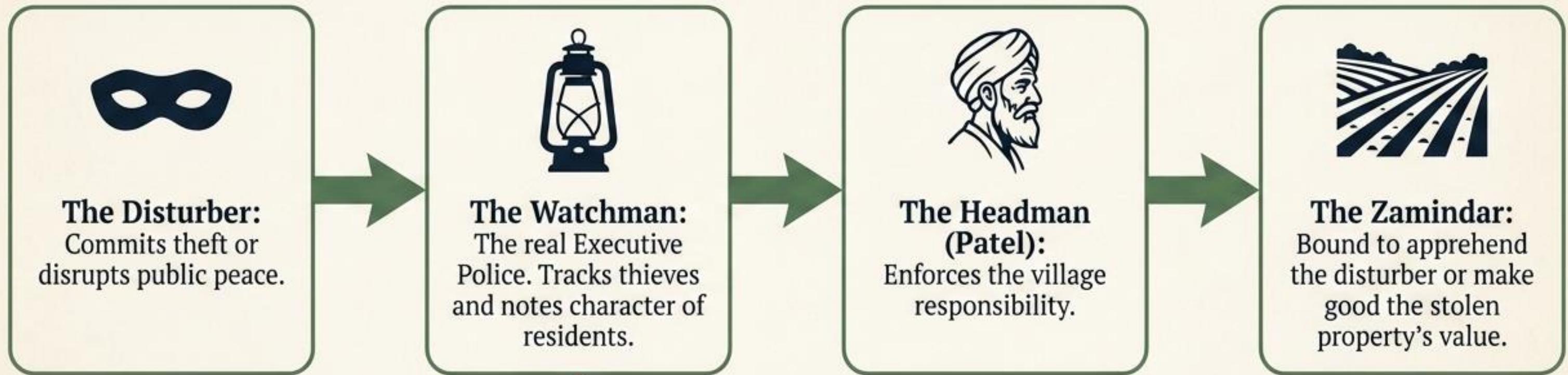
Feudatory Chiefs (Ranging from Bahawalpur's 15,000 sq. miles to Darkoti's 8 sq. miles and 518 souls)

*"No other Indian Province has suffered so many political convulsions... It magnanimously guards the gateways of that Empire."*



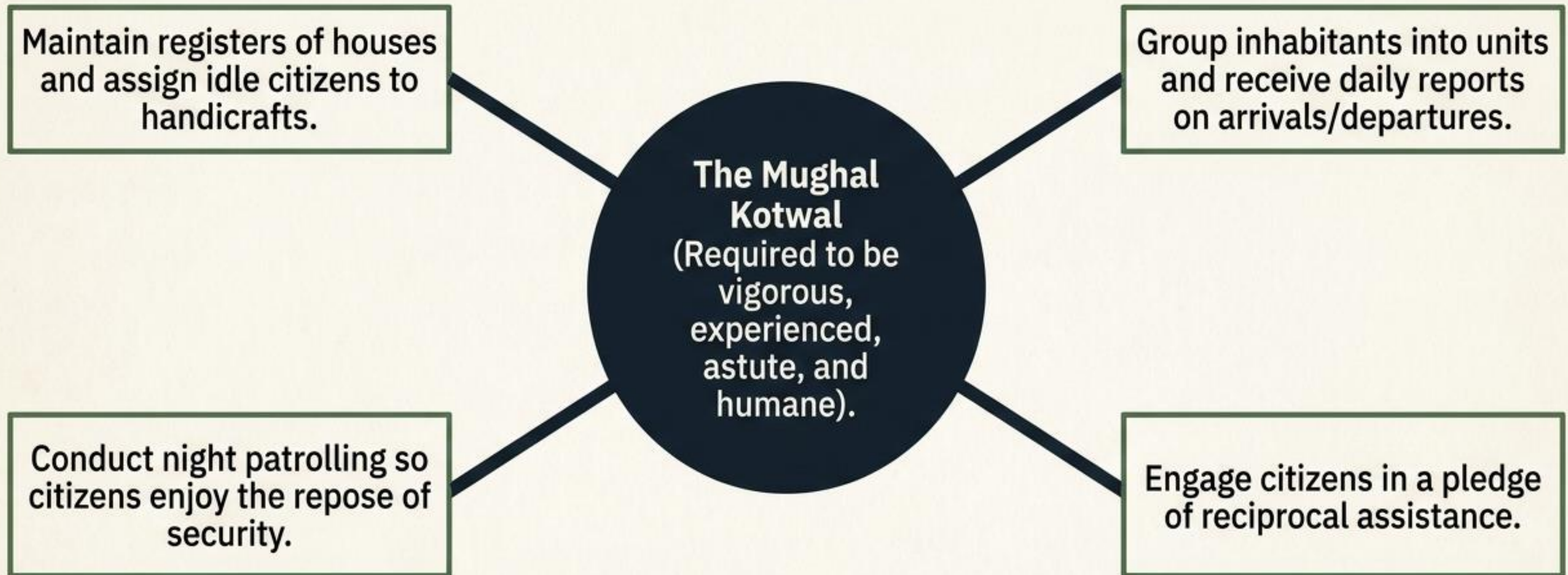
# The Indigenevous Village System: Joint Responsibility

## Accountability Chain



**The system's weakness:** Watchmen were often thieves themselves, colluding with the Patel to harbour criminals and share profits. Payments were routinely made to plundering tribes just to prevent depredations.

# The Kotwal's Mandate (Akbar's Mughal System)

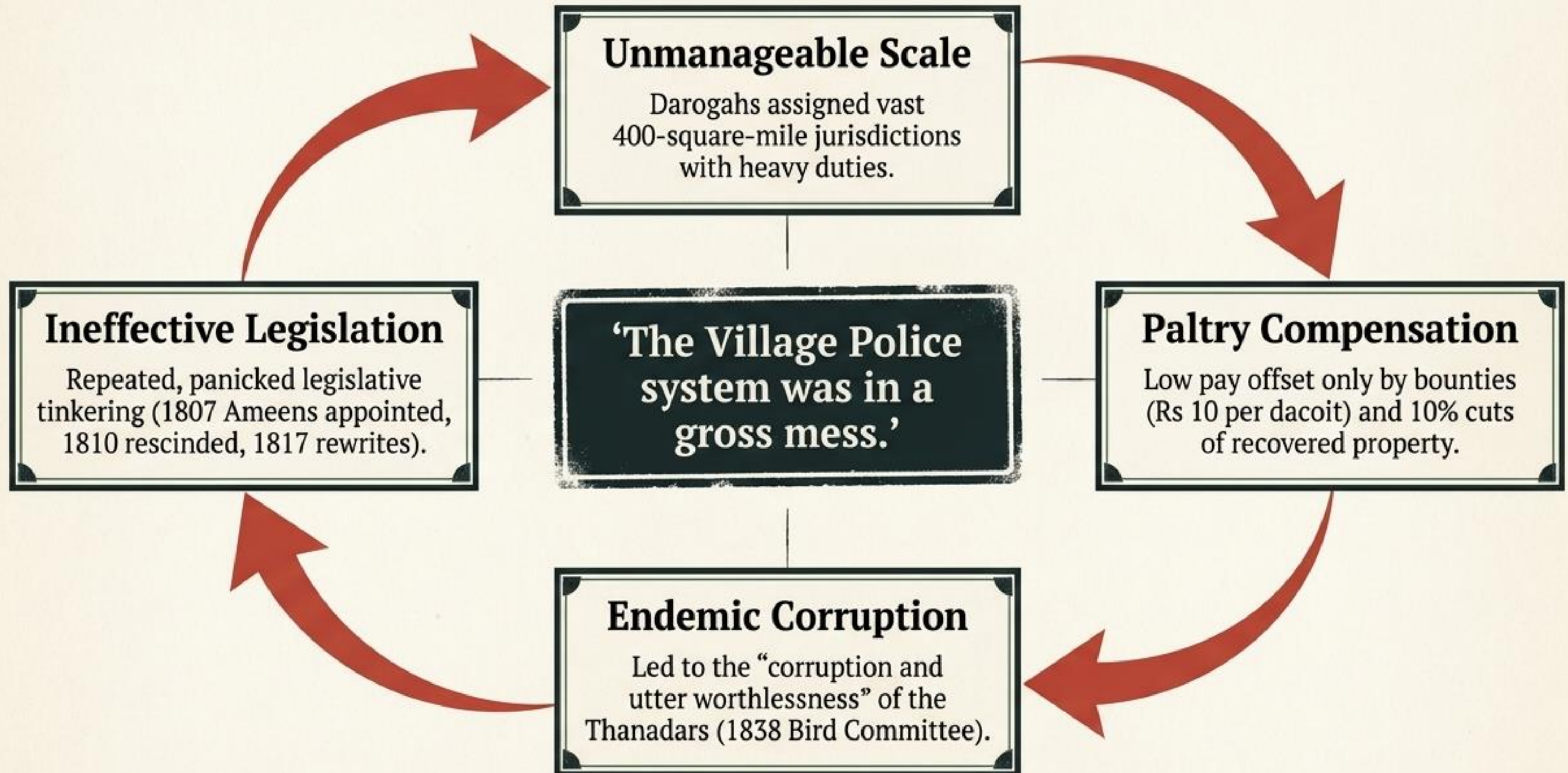


Highly effective for a simple agricultural community, but catastrophic under political strain. Without control from above, extortion and oppression flourished unchecked.

# Diagnostic Matrix: Pre-Colonial & Early Regimes

Regime	Primary Objective	Method	Fatal Flaw
<b>Maurya &amp; Mohammanan Espionage</b>	Absolute state control and crushed disobedience.	Secret spies disguised as merchants, ascetics, and widows.	Reign of peace achieved only through crushing tyranny and mutilation.
<b>Mughal Kotwal System</b>	Urban harmony and mutual security.	Intense local surveillance, night patrols, and citizen pledges.	Relied entirely on political stability; collapsed into systemic extortion.
<b>Cornwallis Darogah System (1793)</b>	Rural pacification under early British rule.	Zillahs divided into 400 sq. mile jurisdictions. Government-paid Darogahs offered Rs 10 per dacoit captured.	Massive geographic over-extension led to endemic corruption.

# The Anatomy of Administrative Failure (1793–1838)



# The Breakthrough: Sir Charles Napier in Sind (1843)

## Pre-1843: The Dual System



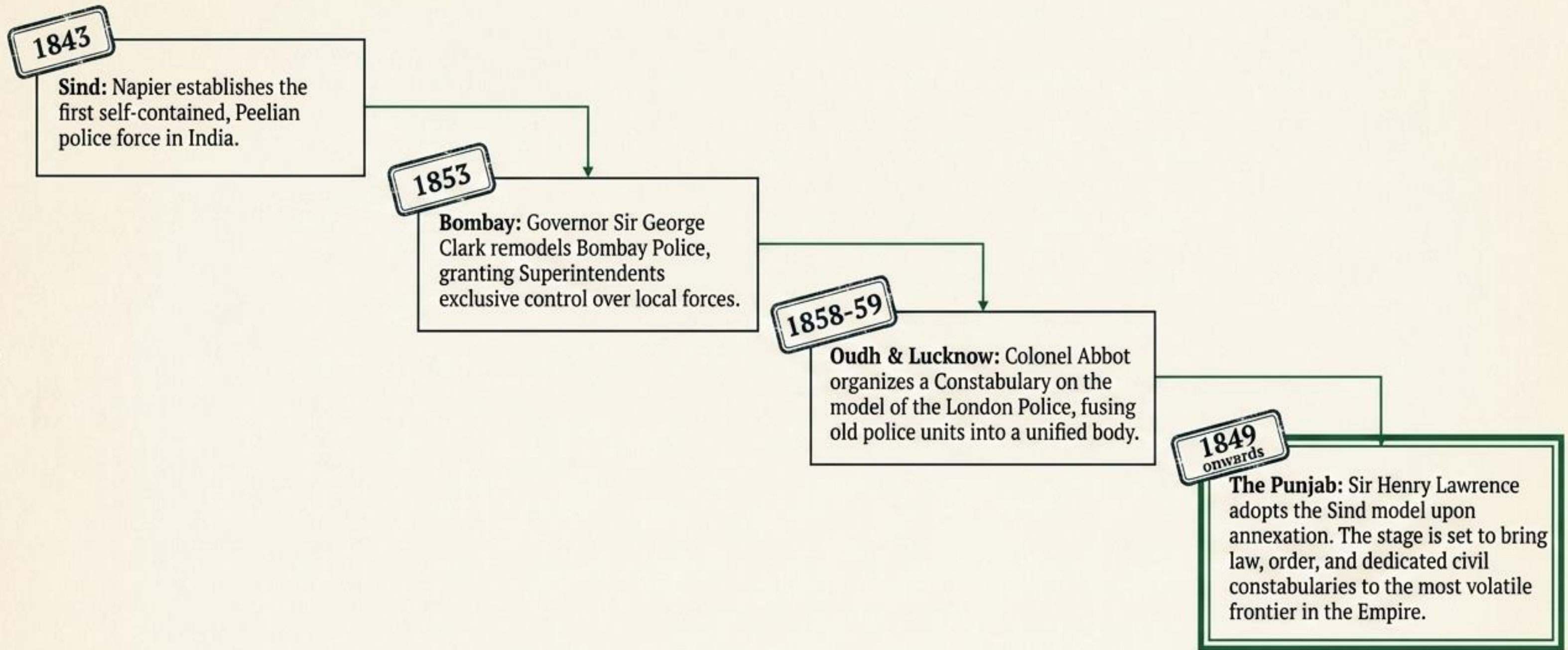
Police powers tangled with landholders, Tahsildars, and Fauzdari Adawlat judges.

## Post-1843: A Separate & Self-Contained Organisation

- Solely employed on police work.
- No other administrative duties.
- Directed by an exclusive Superintendent of Police in each district.

This conceptual separation of **Executive** and **Judicial** duties finally cured the 'gross mess' of the Darogah era.

# The Cascade of the Modern Constabulary



*Thus, an exotic institution created by the English replaced chaos and incendiariam with a new era of systematic order.*